

# Newsletter

Winter / Spring 2016-17



WORKING WITH THE COMMUNITY FOR THE COMMUNITY



Chandler's Ford  
Parish Council

## Dear Residents

Dear Residents

I am very pleased that the Parish Council has agreed a 0% increase in our precept this year. We have been able to keep the precept at current levels by continuing to review costs and making savings in our expenditure.

These savings have not reduced our services to you, and indeed we are improving them by bringing the grounds maintenance in-house from 1 April this year. This will not only be more cost effective, but will also enable additional time to be spent on maintaining our Parish assets.

We are continuing to make changes to the assets we have taken over from Eastleigh Borough Council, and Council has already agreed 4 items of new play equipment in three of the play areas in the coming year, at Cox Row, Suffolk Drive and Mead Road, which should be installed in time for the summer holidays – and watch out for the exciting plans we have for developing the Hiltingbury Pavilion!

We are also considering other asset transfers – so watch this space!

We are holding the Fryern Funtasia again this year on Bank Holiday Monday 1st May, with some exciting new attractions for the youngsters including 'Laser Quest'. Please put this date in your diaries and I do hope I shall see you there.

Yours

**Margaret Atkinson**

*Chairman Chandler's Ford Parish Council*

## Budget/Precept 2017/18 0% Increase

Following the Parish Council's Full Council meeting of 23 January 2017 it was agreed to keep the precept for the coming year at £50.27p for a Band D property.

Income streams generated by room rental and increased football pitch rental have helped keep the council tax needed for the maintenance of the parish's assets and activities at a stable level with a zero percent increase being proposed in the 2016-2017 budget, and again this coming year.

*Continues on next page.*



## In this issue

- Suspicious Behaviour? Report it to 101
- Improving Parish Services
- Hiltingbury Pavilion Extension
- Hiltingbury and Fryern Recreation Ground Parking Enforcement



## May Day Fryern Funtasia

### Put it in Your Diary!

The Parish Council will once again, be hosting the Fryern Funtasia Community Event at the Fryern Recreation Ground on Monday 1st May 2017.

The event will include a wide range of entertainment for children and adults alike, with some new attractions such as Laser Quest alongside some of the old favourites. We are hoping there will also be both a five-a-side and a walking football tournament – details of how to enter your teams will be available shortly on the Parish Council's website. There will be many different varieties of food available for all the family to enjoy, live shows and displays, stalls and activities, so come and join in the festivities.

***May Day 2017 is sure to be a fun filled day for all!***

## Budget Precept 2017/18 - 0% increase (continued)

Whilst council staffing is being increased, by the addition of a Facilities Manager last September and Grounds Maintenance staff from March/April this year, savings are being made in terms of contracted out costs, which keeps the overall expenditure the same on our recreation grounds but with increased work hours and ongoing maintenance of grounds quality.

Good budget control means that again £50,000 can be invested in our play areas, with Cox Row, Suffolk Drive and Mead Road benefitting in the coming financial year.

£12,000 is available for community initiatives such as partnership funding of local youth support services, £5,000 for a further 'Have Your Say' funding round, £3,000 for generic grants and we will continue to part fund the costs of two PCSOs for our Parish.

## Improving Parish Services, at No Extra Cost

As of the beginning of April this year we expect to be employing grounds staff directly to manage the maintenance of the recreation grounds, football pitches, and play areas. This will increase the hours of grounds maintenance delivery for the Parish and give us flexibility in our maintenance programme.

Since last spring officers of the Parish Council have spent time researching and undertaking a thorough procurement process, to ensure that the council's public money is properly spent on equipment that will be 'up-to-the-job', not just for the short-term, but also for the long-term.

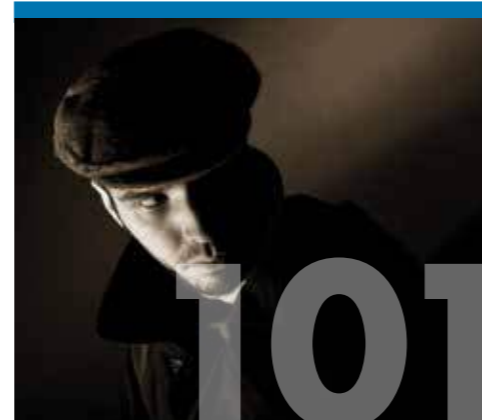
The new equipment will be as environmentally friendly as possible, both in terms of CO2 emissions and noise pollution. Hopefully this will create less disturbance to neighbours of recreation grounds from machinery noise when strimming. This equipment will all need to be stored securely and the Parish Council has installed a pre-fabricated building for this purpose at the Fryern Recreation grounds.

The golden oak finished building blends well with its surroundings and is expected to last for about 40 years.



## Xelabus X6/7!

The Xelabus X6/7 service is being underused at peak hours and risks losing its subsidy this November if it does not become a viable service. Hampshire County Council and Eastleigh Borough Council have funded it this year, but that will be reviewed over the summer/autumn...if the bus service is important to you, please use it or else it might be cut at peak hours.



## Suspicious Behaviour? Report it to 101

The local police have asked us to remind residents that should you see suspicious or anti-social behaviour, including recreational drug taking in public places, then please report it to 101 so that they get a fuller picture of what is happening in the local area.

## Hiltingbury Pavilion Extension

Following consultation and a feasibility study undertaken by TKL Architects Ltd a project of an extension to the Hiltingbury Pavilion and refurbishment of the existing building was put forward to Eastleigh Borough Council (EBC) for consideration for part funding through the New Homes Bonus Scheme.

We are delighted to be able to report that Eastleigh Borough Council have granted funding from the New Homes Bonus Scheme towards this project to resurrect a dilapidated building to create a centre for sport to improve the health and wellbeing of our local community. This scheme is now moving forwards to detailed project design for a planning application.

There is still a long way for this project to go in terms of completing all the steps for the Parish Council to be able to give full approval to the design, the business case and ensuring that it reflects good use of public funds, and finally that it fits the desires and aspirations of the local community.

## Football Pitch Line Marking - If It Looks Fresh Please Keep Off The Lines!

The Eastleigh Borough Council grounds staff have asked that residents, especially dog walkers be reminded that wet paint is used when marking football pitch lines and request that the lines are kept clear of for about 20 minutes after lining.

The Parish Council cannot take any responsibility for damage caused by wet line paint to car interiors, carpets or clothing arising from shoes/wellies/dog paws getting covered with paint by people walking on the freshly marked lines.



**Informal Football:** The Parish Council would like to remind youngsters that there are informal football facilities five-a-side with rebound boards at Pennine Way, Lincoln's Valley, a single goal at Suffolk Drive play area, with enclosed MUGAs at Hiltingbury and Fryern recreation grounds.

**Please only use areas** for football that have been properly set aside for that purpose by the council.



## Hiltingbury and Fryern Recreation Ground Parking Enforcement

After a lot of thought, debate and research, the Parish Council has agreed to put parking enforcement measures in place at the Hiltingbury and Fryern Recreation Grounds car parks to ensure that spaces are not taken up by people who are not using either the recreation grounds, 'The Hilt', Scouts Hut or Hiltingbury/Fryern Pavilions. This will return the car parks to their properly intended use.

**Enforcement will come into place after the February half-term break. Restrictions will be in place Monday to Friday 0730hrs to 1700hrs, with a maximum stay of 3 hours with no return within 3 hours.**

Exempted vehicles will be managed by the Parish Office and will only be available for long-term visitors to the pavilions, such as staff, or visitors if they are attending a day-long course/booking (in which case they will be exempted for that day only).

Parking outside of these times, such as evenings and weekends, will not require inclusion on any exempted vehicle list.

# Chandler's Ford Parish Councillors 2016/2017

---

Chairman

**ATKINSON, Margaret** (Hiltingbury East) 023 8026 8510

Vice-Chairman

**BOYES, David** 023 8025 5467

---

## Chandler's Ford East

**AUBRY, Jacqui** 023 8036 1836

**BULL, Colin** 023 8026 6100

**LESLIE, Kim** 07979 558762

**SCOTT, Tony** 07799 770206

---

## Chandler's Ford West

**BROADHURST, Alan** 023 8025 3648

**FOULDS, James** 023 8027 5900

**JOHNSON, Ron** 023 8027 1319

**PRAGNELL, David** 023 8036 7831

---

## Hiltingbury East

**COX, Jacqueline** 023 8026 8069

**JOLLY, Nick** 023 8026 9451

**SIMMONDS, Zandra** 023 8026 6875

---

## Hiltingbury West

**DUGUID, James** 023 8026 1628

**GRAJEWSKI, Judith** 023 8026 3179

**HUGHES, Michael** 023 8090 7497

---

## Velmore

**BICKNELL, Paul** 07999 739882

**LUFFMAN, Peter** 023 8061 8437

---

The Parish Office is open for enquiries from Monday through Friday 9.15 a.m. to 3.00p.m. to take your enquiries in person, by phone or by email. It is also open Saturdays from 10.00 a.m. to 3.00 p.m.

Telephone: 023 8026 6612

Email:  
clerk@chandlersford-pc.gov.uk

Parish Council Officers:

Parish Clerk: Duncan Murray

Assistant Clerk: Sukey Spurlock

Compliance Officer: Phil Eades

Facilities Manager:

Giles Ashley-Down

Admin Assistant: Diane Dawes

Caretaker: Tomor Beqo



**Chandler's Ford**  
Parish Council

Fryern Hill Pavilion  
Greenways  
Chandler's Ford  
SO53 2LE