

# Newsletter

Summer 2019



WORKING WITH THE COMMUNITY FOR THE COMMUNITY



Chandler's Ford  
Parish Council

## Dear Local Residents

The Hiltingbury Sports Hall is an important additional facility for our Community. Do contact the great team which has been recruited to run it and do try it out.

If you are already a regular sports person, or someone just getting into (or back into) Sports activity it's an excellent local facility in a supportive environment.

Your Council has also made some useful grants to local community charities, which are detailed on page 3 - In future years, especially if we can make a commercial success of the pavilion, we can do more still.

The youth activity, which we support, is really important for our young people, and we are mindful that to support social activities for our Seniors is important as we strive to make Chandler's Ford and Hiltingbury an even better place to live.

**James Duguid**

*Chairman Chandler's Ford Parish Council*

## Hiltingbury Sports Hall

The extended and refurbished Hiltingbury Pavilion opened on 1 July, with its first month as a 'shakedown' period ensuring that the booking system worked, could take payments and was secure. A few, minor, glitches were found and resolved in the set-up of the software and changes were made to improve the appearance of some pages.



## In this issue

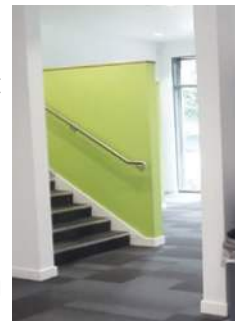
- Hiltingbury Sports Hall
- Fryern Funtasia
- Granted to You
- Safer Access to Schools Path
- Extravaganza 2019 is back!



It is a very different building to what was there before. The entrance is uncluttered and offers a reception area, vending (decent coffee, hot chocolate, cold drinks and snacks), a waiting area and accessible toilet and shower facilities for wheelchair users etc.

There are steps and a platform lift up to the upper ground floor where the male and female changing areas are located along with lockers.

Two refurbished team changing rooms along with two officials' changing rooms are accessible from the northerly access by the tennis courts.



## Hiltingbury Sports Hall



**SPACIOUS ROOMS**

Rather than a pokey room upstairs, there are three airy and spacious rooms varying from 140m<sup>2</sup>, to 51m<sup>2</sup> and 40m<sup>2</sup>. Access by lift is available for wheelchair users. The largest studio area has a semi-sprung floor as well as air conditioning.



### SOFT TENNIS FUTSAL/5-A-SIDE BADMINTON

Clubs and groups have already started making regular bookings in the sports hall with weekday evenings and Saturday mornings being very popular for badminton, soft tennis, basketball, netball and futsal/5-a-side being the front-runners for bookings.



Looking to community use we are putting on multi-person activities, such as walking football, short mat bowls and table tennis so that individuals can book a place and join in with others in gentle, social, exercise.

## SPORTS BOOKINGS

Can be made on <https://chandlersford.sports-booker.com/customer/> by registering with a valid email address or by calling **023 8017 0506** and you can keep in touch with what is happening by visiting their Facebook Page <https://www.facebook.com/sports-hallchandlersford>

### Meet the Team

The Sports Hall team are made up of Geoff (Team Leader), Gemma, Cameron and Todd. They have a wide range of sporting interests ranging from Iron Man/Triathlon to fitness instruction, martial arts and football/futsal along with refereeing qualifications and coaching experience.



**SHORT MAT BOWLS**

## Granted to You

Last year all our applicants attended the evening and did a small presentation which was useful in not just informing the Parish Council what groups do and were wanting to improve, but also informing the other applicants about their activities. All the applicants received their grants, which were actually increased to use up the £5,000 budget. This event will be run again this year in the autumn, so keep an eye on the Parish Council's webpage from September onwards.

### The applicants last year were:

**C/Ford Men's Shed** (Charity/NFP) Hexagon Centre £500 funding towards a second shed to use for meetings, painting projects etc in a dust free environment.

**Scantabout PTA** £700 for the provision of a secure, portable musical instrument trolley and trolley/storage unit to enable the movement of instruments and release other storage space in the school hall.

**Hiltingbury Junior Schools Volunteer Garden Project** £500 for part of costs for helping refurbish the wildlife garden project, creating an extra-curricula wildlife learning resource positively impacting on child development. Grant to be spent on timber for shelter (etc) table/bench and microscope. (This with other funding and funding partners turned into a bigger project to renovate the pond area, making it wheelchair accessible and increasing the quality of the area and its biodiversity.)



**Centrestage Productions Youth Theatre** (Charity) £1,000 funds to replace broken/worn out tent that is used for changing facilities for productions, as well as a focal point when attending Fryern Funtasia and Hiltingbury Extravaganza.

**Chandler's Ford International Scouts** (Charity) funds towards sending 18 youngsters to International events in USA, Canada and Uganda. Encompassing the World Scout Jamboree (USA, 4-yearly event) and painting/renovating a school as well as arranging scouting activities for local scouts (Uganda).



## Extravaganza 2019 is back!

The Hilt's Extravaganza is back this year, a week later than usual on the 22nd September. It runs from 12.00 noon till 5.00pm and has arena events, music zone with live bands, ride attractions including Segways and Spider Mountain. Kids will love the Pony Rides and Petting Farm and there's plenty of food outlets available to keep everyone fed and watered. Both the Police and Fire Brigade will have vehicles and equipment on show and the afternoon also includes the many events in our arena area including the Fair Oak Dog Display Team and Falcon High birds of prey. Don't miss this great event on Hiltingbury Recreation Ground next to The Hilt and recently opened Pavilion Sports Hall.

They still have sponsor places left including stall holder places. If you can volunteer your time on the day, they'd love to hear from you. For volunteering or commercial sponsors and exhibitors you can email them at [enquiries@thehilt.org.uk](mailto:enquiries@thehilt.org.uk).



## Safer Access to Schools Path

The path leading from near the Ashdown Road/Hiltingbury Road junction across the recreation ground to the schools that was funded by Hampshire County Council and s106 contributions for sustainable transport solutions (such as paths/cycleways) has proved an incredible success. It is having far more use than was ever anticipated or hoped for. This in turn has provided its own challenges and issues. The Parish Council is pleased to be able to report that funding has been approved for a feasibility study into providing some form of crossing or central refuge on/in the road. Further information should become available in the autumn.



Funtasia 2020 will be held on the Bank Holiday Friday 8th May



May Day Bank Holiday was wonderful, not too hot, not wet and with a bit of a breeze. It is estimated that well over 5,000 people attended the event throughout the afternoon, making it one of the best attended Funtasias ever. The Police, Fire Service and First Responders were all present for the afternoon displaying equipment

There were the old favourites, some new rides and displays along with a petting farm that was free and extremely popular. A lot of burgers, hog roast rolls and ice cream were eaten. His Worship the Mayor of Eastleigh Cllr Bruce Tennent officially opened the event and attended for the whole afternoon meeting stallholders, visitors and members of the public. Funtasia 2020 will be held on the Bank Holiday Friday 8th May (moved from Monday 4th May to celebrate the 75th anniversary of VE Day) and we are wanting to ensure that these special celebrations and Funtasia are intertwined.

# Chandler's Ford Parish Councillors 2018/2019

Chairman

**James Ian Duguid** (Hiltingbury West) Email: jduguid@btconnect.com 023 8026 1628

Vice-Chairman

**Mrs Janet Evans** (CF East) Email: janet.evans.006@gmail.com 023 8025 3188

## Chandler's Ford East

**Peter Child** Email: p.child@ntlworld.com 023 8027 6841

**Jacquie Aubry** Email: jacquieaubry@yahoo.co.uk 023 8036 1836

**Martin Kyrle** Email: martinkyrletraveller@gmail.com 023 8026 5035

## Chandler's Ford West

**Wayne Irish** Email: wayne.irish@eastleigh.gov.uk 023 8032 8560

**Ron Johnson** Email: jamesjohnson\_uk@yahoo.co.uk 023 8027 1319

**David Pragnell** Email: David.Pragnell@ntlworld.com 023 8036 7831

**Alan Broadhurst** Email: alan.broadhurst@eastleigh.gov.uk 023 8025 3648

## Hiltingbury East

**Mrs Margaret Atkinson** Email: margaret.atkinson2010@googlemail.com 023 8026 8510

**Jacqueline Cox** Email: j.cox.parish.cllr@gmail.com 023 8026 8069

**Benjamin Dolbear** Email: benjamindolbear@gmail.com 07857 205405

**Daniel Newcombe** Email: newcombe@hotmail.com 023 8026 8116

## Hiltingbury West

**Pam Holden-Brown** Email: pamelaholdenbrown@btinternet.com 023 8026 1858

**Michael Hughes** Email: mikeandednahughes@outlook.com 023 8090 7497

**Helen Ricketts** Email: helen.ricketts@btinternet.com 07713 949154

## Velmore

**Paul Bicknell** Email: paul.bicknell@eastleigh.gov.uk 07999 739882

**Alex Bourne** Email: alex\_bourne@sky.com 07411 782421

The Parish Office is open for enquiries from Monday through Friday 9.15 a.m. to 3.00p.m. to take your enquiries in person, by phone or by email. It is also open Saturdays from 10.00 a.m. to 3.00 p.m.

Telephone: 023 8026 6612 Email: clerk@chandlersford-pc.gov.uk

Parish Council Officers:

Parish Clerk: Duncan Murray

Assistant Clerk: Jacky Wilson

Compliance Officer: Phil Eades

Facilities Manager: Tomor (Tori) Beqo

Admin Assistant: Diane Dawes

Caretaker: Vacant

Team Leader Hiltingbury Sports Hall/Pavilion: Geoff Mitchinson

Sports Hall Staff: Gemma Adsett, Cameron Ross and Todd Elliott



**Chandler's Ford**  
Parish Council

Fryern Hill Pavilion  
Greenways Chandler's Ford  
SO53 2LE